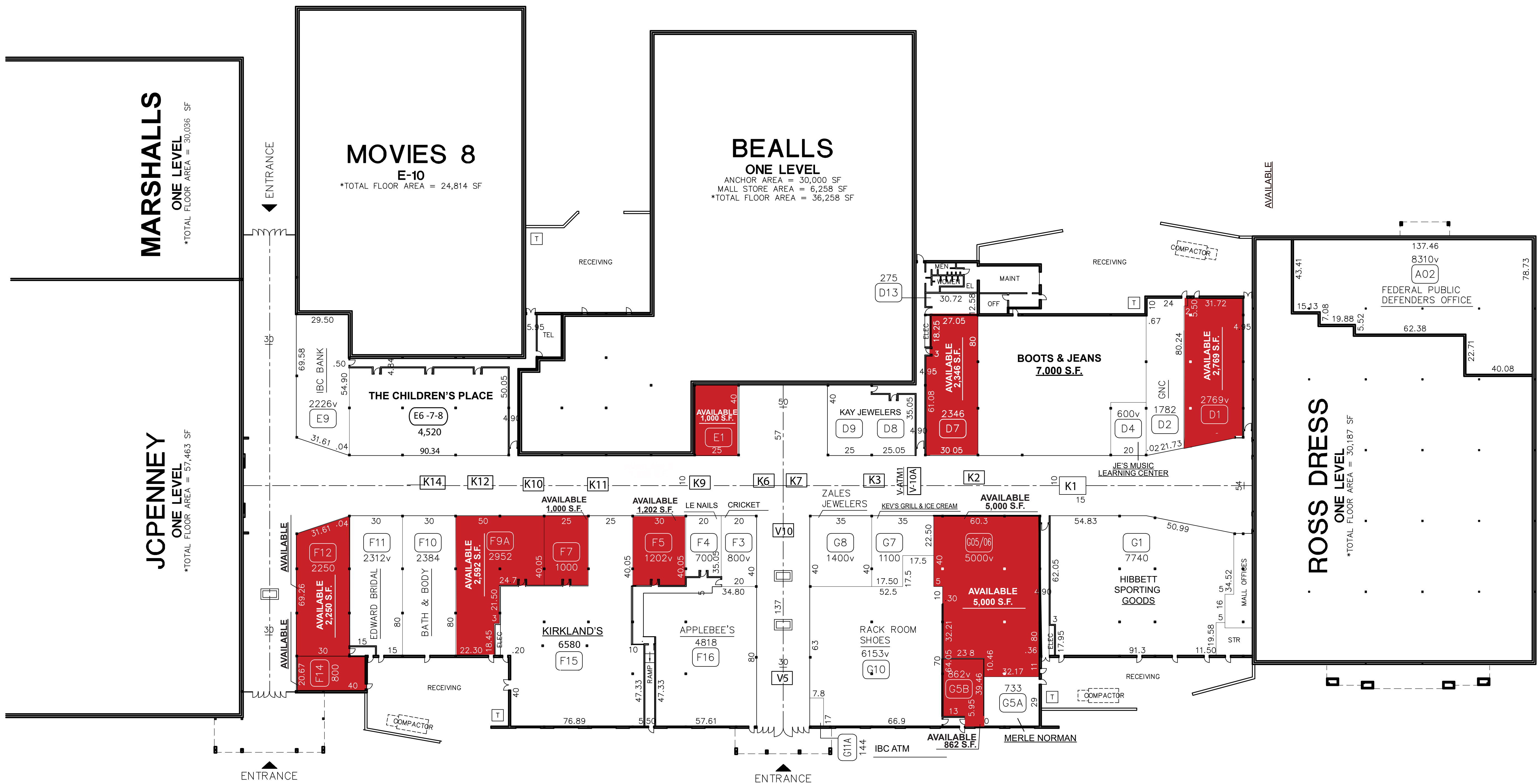


| | | | | | | | |
|---|-----|------|-----|---|---|------------|------------------|
| REVISION: | 015 | DDDL | 014 | A | S | 04/23/2009 | ANCHOR NAMES ON. |
| ADDED DBA TO UNIT D8 & D4. REVISED DBA FOR UNIT A02. REMOVED DBA FROM UNIT E1, D9, & K1. | 012 | JAYS | 012 | A | S | 04/07/2008 | |
| ADDED DBA TO UNIT D9, F5 & F6. REVISED DBA FOR UNIT F11. REMOVED DBA FROM UNIT K2, G5A, D1, D8 & BLDG C-02. | 013 | JAYS | 013 | A | S | 10/07/2008 | |
| ADDED DBA TO UNIT E9. REVISED DBA FOR UNIT F11. REMOVED DBA FROM UNIT F15, F5, E7/8 & D9. | 014 | JAYS | 014 | A | S | 04/01/2009 | |



LEASE PLAN

PLAZA DEL SOL
 2205 AVENUE F DEL RIO, TX 78840
 Phone: 830-774-3634



PLAZA DEL SOL

| BUILDING STATISTICS | | TOTALS |
|-------------------------------|--------|---------|
| MALL STORES G.L.A. | | 67,413 |
| INTERIOR ENTRANCE | | |
| IN-LINE G.L.A. | | 14,949 |
| EXTERIOR ENTRANCE | | |
| IN-LINE G.L.A. | | 82,362 |
| MALL STORES NON-LEASABLE AREA | | |
| STORAGE | 933 | |
| ENCLOSED MALL | 32,486 | |
| CORRIDOR | 3,908 | |
| MAINTENANCE | 931 | |
| MISCELLANEOUS | 2,088 | |
| TOTAL NON-LEASABLE | 40,346 | |
| MALL STORES T.B.A. | | 122,708 |

| | | |
|-------------------------|----------------------|--------------------|
| LEGEND | MCU - MALL CLEAN UP | 000 - UNIT SQ. FT. |
| INF - INFORMATION BOOTH | MNT - MAINTENANCE RM | 000 - UNIT NUMBER |
| DIR - MALL DIRECTORY | ELEV - ELEVATOR | |
| STR - MALL STORAGE | EER - ELEV EQUIP RM | |
| TEL - TELEPHONE | SPR - SPRINKLER RM | |
| LCK - LOCKERS | ELEC - ELECTRICAL RM | |
| CAN - CAN WASH | SGR - SWITCH GEAR RM | |
| JCL - JANITOR CLOSET | TRAN - TRANSFORMER | |

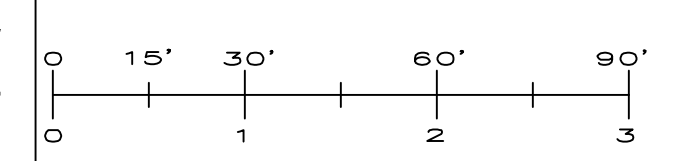


EXHIBIT PRINTING DATE: 04/01/2009
 SCALE: 1"=30'
 JOB NUMBER:
 REVISED BY: DDL
 IN-HOUSE DATE: 04/01/02
 CAD FILENAME: PLLP1
 DRAWING NUMBER: LP 1

THIS PLAN SHALL NOT BE DEEMED TO BE A WARRANTY, REPRESENTATION OR AGREEMENT ON THE PART OF THE LANDLORD THAT THE SHOPPING CENTER WILL BE, OR WILL CONTINUE TO BE AS INDICATED HEREON WITHOUT CHANGE. LANDLORD MAY, FROM TIME TO TIME, INCREASE, REDUCE, AND/OR CHANGE THE PARKING AREAS OR COMMON AREAS AS LANDLORD SHALL DEEM PROPER. LANDLORD RESERVES THE RIGHT TO CHANGE THE GENERAL LAYOUT, AND TO MAKE ALTERATIONS AND ADDITIONS TO, AND TO BUILD ADDITIONAL STORES ON THE BUILDING IN WHICH THE PREMISES ARE CONTAINED OR WHICH OTHERWISE COMPRISE THE SHOPPING CENTER AND TO MAKE ANY OTHER CHANGES AS MAY BE REQUIRED BY APPLICABLE CODE OR AUTHORITIES. THIS PLAN IS SUBJECT TO CHANGE, AND IS NOT A WARRANTY, REPRESENTATION OR AGREEMENT THAT PROSPECTIVE TENANTS OR ANCHOR STORES SHOWN HEREON WILL BE TENANTS OR ANCHOR STORES AT THE LOCATIONS SHOWN OR AT ANY OTHER LOCATION IN THE SHOPPING CENTER.